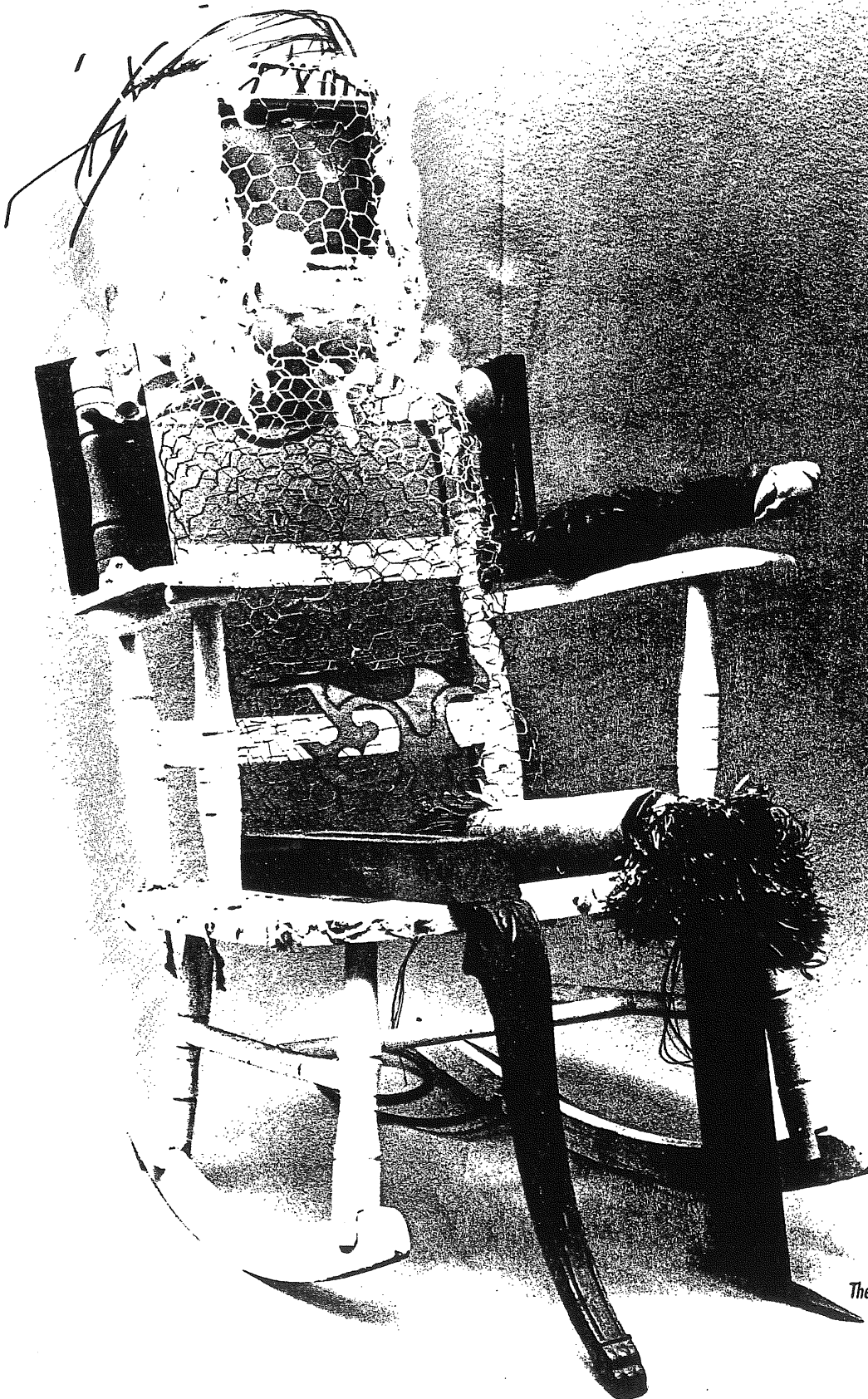


**Artists Using Science and Technology**

Ylem (Eye-lum): The exploding mass out of which the universe emerged in the Big Bang

**Ylem Newsletter**  
Vol. 14, No. 3 March 1994



*The Crone, mixed media sculpture by Magi Bollock*



## Cover Artist

## News of Members

Magi Bollock's work challenges "the woman's place in society." She uses computer and video technology to transform strictly feminine accessories into thought-provoking visual statements about the socialization of women. The incorporation of "new media" in her work is strongly contrasted with the familiar feminine—the soft, the helpless and the sweet.

To celebrate Women's History Month, we place *The Crone*, on the cover. It was created from an old, worn-out rocking chair found in a dump. It represents how the wisdom and experience of old women in our society is devalued and the women themselves relegated to obscurity. On the monitor in her head plays a video contrasting the modern negative ideas of aging with the respect for wise old women in other cultures and times. In a curious way, it also ties in visually with the March Forum theme concerning nets, networking and computers.

*Art Dresser*, an intensely pink dressing table with a monitor in the mirror, is littered with typically feminine objects conveying women's anxiety about their looks. Rather than the idealized face she hopes to see—the adolescent fantasy generated by the beauty myth—the viewer is confronted with her real face on the computer monitor. Video, one of the very media in which women's image is defined as thin, young, often white and heavily made up is used to invite women to take another look.

*Birdcage of Love* contrasts the idealized images of romantic love and weddings with actual videos of women speaking about the break-up of their marriages. White doves, the birds of Venus, are bound with white satin ribbons. The bottom of the birdcage is papered with divorce papers.

*She's Got the Whole World in Her Hand* is a transformed purse. It symbolizes the religious baggage of all the prohibitions, definitions and roles that have been dictated by male-dominated churches. A picture of a woman holding a new-born baby teases

*Art of the Electronic Age* by Frank Popper, just published by Abrams, mentions many Ylem members. Among them are: **Phillippe Boissonnet, Georges Dyens, Nancy Gorglione, Karen Guzak, Roger Malina, Jim Pallas, Beverly Reiaer, Lillian Schwartz, Kenneth Snelson, Joan Truckenbrod, The Vivid Group, and Steve Wilson.** Maybe we're prejudiced (Ylem also got a mention) but this book is a much-needed survey of the field. Many, many illustrations in full color... **Steve Wilson** has been nominated for the new artist-in-residence program at Xerox PARC in Palo Alto, the research group which gave us the "desktop" on the Mac and in Windows, as well as the Ethernet, laser printing and CD-ROM technology. He will be paired with a researcher working in similar technologies. **Synapse** has also been invited for a short stay. They were selected by an external panel of arts professionals... **Ed Severinghaus' Bodysynth™** will be seen March 7-8 at a Computer Arts Festival, Richland college in Dallas and March 26-7 at Robofest, Austin TX... *Microtimes* on February 7th featured an interview with **Larry Shaw** about how electronic information is changing not only the exhibits at the Exploratorium, but the museum's outreach to teachers and students everywhere... In November, **Alexander** was guest speaker at the World Congress on Holography in Vienna, and a festival of his work was held at the Cooling Gallery in London... Recently, **Barbara Nessim** was an artist-in-residence at Arizona State University, where she lectured and created an exhibit of her computer

the viewer about what women really carry, the burden of childbirth and child rearing. A viewer-activated recording discusses a multitude of ways in which religions have circumscribed women's lives.

Bollock researches and writes about each piece. For a copy of writings send a SASE with a .52 cent stamp to: 160 Peck Terrace, Santa Cruz, CA 95062.

works. The exhibit travelled to Cincinnati, OH. As Chairperson for the Department of Illustration at Parsons School of Design, Nessim has doubled enrollment for the department and incorporated computers into the curriculum in the past year... **Eleanor Kent** attended the International Artistamp Biennial in Seattle, WA, and stamps showing her knitted fractals were included in the exhibition... **Mike Mosher's** new mural installation piece, *Biotechnology Zone*, was shown in San Francisco in December. In it, Mosher gave his subjective reaction to the proposal to locate biotechnology industries at the edge of the Mission District, San Francisco's most interesting and creative multicultural neighborhood... **Jeff Burden's** and **Diane Fenster's** works were included in The First New York Digital Salon... At First Night Hartford 1994 in January, participants collaborated with **Jo-Ann Castano** to create six 19" X 48" polarized light sculptures. The event and exhibit was commissioned by The Architecture Resource Center (ARC) of the Connecticut Architecture Foundation. The sculptures have become part of ARC's permanent collection... **Nance Paternoster's** work will be in the 7th Annual Computer Art Invitational at Eastern Washington University... The large bronze outdoor sculptures of **Rhonda Roland Shearer** on the subject of *Women's Work*, were seen in New York and Doylestown, PA, last year. Now they travel to Jacksonville, FL, Charleston, SC, and Knoxville, TN.

---

## Directory of Artists Using Science and Technology

Just out! Ylem's 52-page membership directory describes the specialties of all 245 Ylem artists, and is handsomely illustrated with 46 works by the artists. \$15, \$18 outside US. Those joining after Sept. 1, 1993 can obtain one for only \$8. (These people will be in the 1994-5 *Directory* and receive it free). Send checks made out to "Ylem" to Ylem, PO Box 749, Orinda, CA 94563.

### Email, Snail Mail and Fax

March 2, 7:30 pm

### The Exploratorium

In the McBean Theatre, 3601 Lyon St., San Francisco; Contact Eleanor Kent, 647-8503

**Eleanor Kent:** *Nets and Networking.* Kent has been a mail artist, copier artist, computer artist, and is now knitting fractal and mathematical patterns. She deals in both ethernets and yarn nets, and will make unexpected connections.

**Susan Berg** of the Digital Lounge has created a *Multimedia Playground* exhibit at the Exploratorium which will be up and running on the same evening. See Exhibits for more details.

**Patricia Tavenner:** *Pioneering in Mail Art, Stamp Art.* Tavenner has been stamping and mailing and networking around the globe since the early '70s. She has taught at UC Extension.

Computer art by Craig Cassin. Editor's note: Roy Ascott remarks upon the "apparition" that develops as artists do an art piece online.

**Larry Shaw:** *Electronic Connections.* Shaw will describe how the Multimedia Playground was assembled and how it connects to the Internet. He may even get us online somehow! He is the Media Curator for the Exploratorium.

Friday, March 4, 4 pm

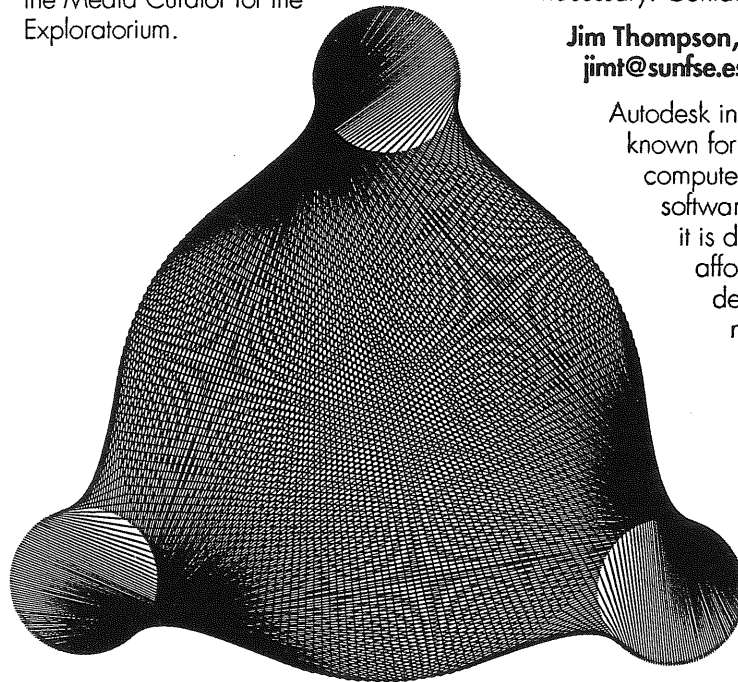
(Postponed from February)

4000 Civic Center Dr., San Rafael CA

The tour is free, but reservations necessary. Contact:

**Jim Thompson, 415-821-9668; or jimt@sunfse.eselmsc.lockheed.com**

Autodesk in Marin County is known for its affordable computer-aided design software, AutoCAD. Now it is developing an affordable virtual reality design tool, variously nicknamed "Cyberia" and "cyberCAD."



### Email Services Lingo

by Steve Wilson and Fred Lakin

#### Email, Gopher and Mosaic

**The Internet** primarily relies on UNIX conventions for communication between computers. To use the Internet, one needs to be connected to a computer that has a registered address on the Internet. Most universities and many commercial services offer these connections. The user at home accesses these computers via their modem and then the host computer establishes the connections. For example, the Well, America Online, Delphi, and other local services advertised in computer publications offer Internet connections. Unlike the point-and-click commands for Windows and Macs, it requires the user to remember the names of commands and their proper syntax.

**Gopher** is a user-friendly shell that hides such details from the user. The user can navigate and issue network-related commands from menus of numbered choices. The Gopher program takes care of the dirty work.

**Mosaic** is a further development of user-friendly access for Internet. This program introduces a graphic interface for the user and facilitates communication of image, sound, and video information. In addition, it supports a hypermedia metaphor in which flexible links can be built among information chunks encountered on the Internet. Underneath, Mosaic is translating the user's clicks into the commands the Internet needs. However, to use the new graphic systems such as Mosaic one needs a direct, high-speed connection, which is difficult by standard phone lines.

**The Web** is currently the largest network of multimedia, including text, still images, animations and music. Web use grew 220,000% in 1993. At this time the Web has approximately 500,000 users worldwide, and thousands of gigabytes of multimedia information available. The Web is also called the **WorldWideWeb** or **WWW**.

The various multimedia Web libraries exist in depositories scattered all over the Internet called "servers." A person then uses a piece of software called a

"browser" to navigate around this multimedia network [web]. Use of the Web itself is free. In order to start browsing, one needs three things: direct Internet access, a browser, and the full text for at least one starting point or node on the web from which to start crawling around. A text node name is called a **URL ("Uniform Resource Locator")** and looks like this:

[http://www.msstate.edu/  
Fineart\\_Online/home.html](http://www.msstate.edu/Fineart_Online/home.html)

This happens to be the URL for FineArt\_Online, which includes: Links to new galleries on their Web server: Scott Draves (winner of an Honorable Mention at Ars Electronica 93), Marius Watz (Norway)

There seem to be around 50 web servers for art right now. The Exploratorium is a server.

Besides being an electronic gallery, the web could also be used for interactive art pieces via a browser interface mechanism called "forms" which supports live person-<>web-server dialog.

## Events

March 1-3

### Intermedia '94 Exposition

Video editing, computer-generated imagery, animation, modeling, rendering or simulation, held at the San Jose Convention Center in San Jose, CA. Products and services from close to 300 exhibiting companies. Sponsored by Multimedia World, \$225. **Intermedia '94 c/o ACCU, Inc., 1420 MacArthur Dr. #104, Carrollton, TX 75007; Fax 214-245-8700.**

March 17-20

### Glass Art Society Annual Conference

Held in Oakland, CA. Theme: "Pacific Cross Currents." Panel discussions, lectures, demonstrations, studio and museum exhibitions. Ylem member Therese Lahaie is one of the presenters. **Glass Art Society, 1305 Fourth Ave., #711, Seattle, WA 98101; 206-383-1305, Fax -2630; info. on glass exhibitions and conference-related events, 415-467-3511**

March 19, 9 AM - 5 PM

### Bridging The Techno Gap (New York)

Sponsored by NYC/ACM SIGGRAPH. The Conference of Computer Graphics in Education. Pratt Manhattan, 295 Lafayette Street, 2nd Floor, New York, NY 10014; 212-925-8481. The disciplines of art and science may speak different languages, yet each has a unique perspective - sometimes of the very same phenomena. Pre-registration Members \$25.00, Non-members \$35.00 by Friday, March 4th at 5:00 at the door: add \$10. **NYC ACM/SIGGRAPH, SVA, 209 East 23rd Street, New York, NY 10010, Attn: Bruce Wands**

March 23-26

### The Fourth Conference on Computers, Freedom and Privacy (Chicago)

Held at Chicago Palmer House Hilton. Theme: "Cyberspace Superhighways: Access, Ethics and Control." Reservations: **The John Marshall Law School, 315 South Plymouth Court, Chicago, IL 60604; 1-800-521-4041 (mention CFP '94 ID Number: 541Q1).**

March 31 - April 4

### Bit Movie '94 (Riccione, Italy)

International contest of computer-generated graphics animations and images. **Bit Movie '94, c/o Carlo Mainardi, via Bologna 13, 47036 Riccione (Italy). Municipality of Riccione, ufficio cultura, fax (++39) (0)541 601962**

## Exhibits

Through March 6

### Multimedia Playground

Workstations and CD players galore! The Multimedia Playground will make the latest advances in multimedia software accessible and approachable to all. (Ylem member Theo Ferguson is helping with the interactive piece there about Solart Global Network, and the REDI Library Pilot described in January's *Ylem Newsletter*). Free with admission to museum. **The Exploratorium, 3601 Lyon St., San Francisco; 415-563-7337**

Opens March 10

### Wunderkammer

Glass artists, including Ylem member Therese Lahaie. **Rena Bransten Gallery, 77 Geary St., San Francisco, CA; 415-982-3292**

Through March 11

### MFA Exhibition (New York City)

Fourteen New York Area arts institutions are having a giant MFA exhibit to coincide with the College Art Association Conference. Look for work by Ylem member Joan Webster Price in the City College/CUNY exhibit. **Hunter College Fine Arts Building, 450 W. 41st St., New York, NY; 212-772-4991**

Through March 19

### Capp Street Project Moves to Yerba Buena Neighborhood

Three Site-Specific Installations by: Mildred Howard, Ik-Joong Kang, Donald Lipski. Admission: Free. Location is near Yerba Buena Center for the Arts, the future San Francisco Museum of Modern Art, and Ansel Adams Center. **Capp Street Project, 525 Second Street (at entrance to South Park)**

Through March 20

### North by Northeast

Nine glass artists from the North Bay Area including Ylem member Therese Lahaie. **Richmond Art Center, Civic Center Plaza, 25th and Barrett, Richmond, CA; 510-620-6770**

Through April 9

### Sculpture by Kenneth Snelson (New York City)

Gravity-defying sculpture. Unusual catalog available in 3D with viewing glasses included. Snelson is an Ylem member. **Maxwell Davison Gallery, 41 E. 57th St., New York, NY 10022; 212-759-7555**

## Opportunities

Deadline March 1

### Chinsegut Conference on the Moving Image

Formats: 3/4", VHS, Video; Performance; 16mm and 35mm film; Fees: None; Categories: Documentaries, Avant Garde, Experimental. Festival Date: April. A congenial, non-competitive gathering of film-videomakers and performance artists, the Chinsegut Conference on the Moving Image is a joint production of the Art Department of the University of South Florida and Atlantic Productions. Although inclusion is by invitation only, work may be reviewed for consideration by contacting the festival prior to the deadline. **1508 Park Circle, Tampa FL 33610.**

Deadline March 1

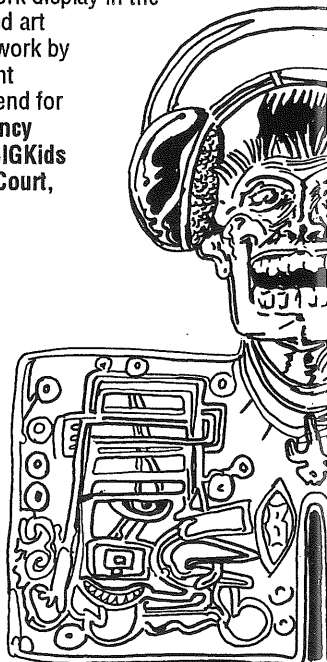
### New York State Council on the Arts

Several projects have deadlines for application by today; some require registration of intent to apply with additional materials due later. All programs are open to NY state folks only. Programs include Electronic Media and Design. Funding for book-length publications journals, catalogs, monographs, resource books, etc. **New York State Council on the Arts, 915 Broadway, New York, NY 10010; 212-387-7000.**

Deadline March 2

### SIGGRAPH 94 SIGKids - Artwork for SIGKids Gallery

If you are currently involved in computer graphics-based educational programs with talented youth, their work display in the SIGKids Gallery, a juried art show of mixed-media work by young people ages eight through pre-college. Send for submission details: **Nancy Ingle, SIGGRAPH 94 SIGKids Chair, 858 Park Lake Court,**



Orlando, FL. 32803 USA; +1.407-649-8955  
phone and fax sigkids.s94 @siggraph.org

*Deadline March 2, 6:00 pm EST*

### **SIGGRAPH Art and Design Show**

Flat art and design pieces. Sculpture, installations, static art. **Deanna Morse, SIGGRAPH 94 Art and Design Show Chair Grand Valley State University School of Communication, Lake Superior Hall, 1 Campus Drive, Allendale, MI 49401-9403; 616-895-3101; Fax: 616-895-3106; artdesign.s94@siggraph.org.**

*Deadline February 2*

### **The Arts Dyslexia Trust**

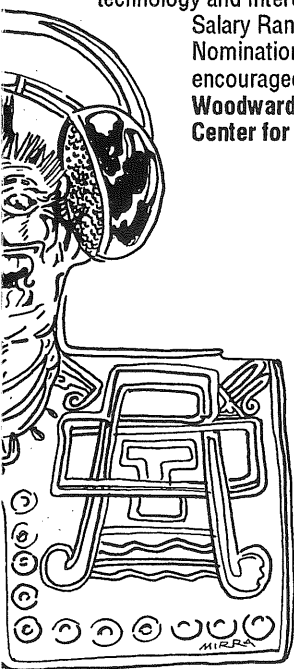
The Arts Dyslexia Trust is launching a major exhibition of work by dyslexic artists, designers, architects, engineers, and scientists (past and present) at the Mall Galleries, London, England, April 12-24, entitled: "In the Mind's Eye—Where Dyslexia may be an Advantage." [We learned about this after the submission date. Network with them anyhow.] **Susan Parkinson, A.R.C.A., Lodge Cottage, Brabourne Lees, Ashford, Kent TN25 6QZ United Kingdom; tel/fax: [within UK] 0303-813-2211[from the USA] 011-44-303-813-221; email 4139461@mcimail.com in the US.**

*Deadline March 4*

### **The University of Wisconsin-Milwaukee Dean of the School of Fine Arts**

The Dean shall provide leadership for the School of Fine Arts and exercise responsibility for its academic and administrative operations, including its physical facilities, personnel, budget and programs. Ask them to fax details. Extensive requirements include capability with technology and interdisciplinary projects.

Salary Range: \$80,000-\$100,000. Nomination of potential applicants is encouraged. **Professor Kathleen Woodward, School of Fine Arts, Center for Twentieth Century**



**Studies, University of Wisconsin-Milwaukee, 3243 N. Downer Ave., Milwaukee, WI 53211; 414-229-4141; fax: 414-229-5964**

*Deadline March 9*

### **SIGGRAPH The Edge**

Includes not only virtual reality, but concepts waiting to be born. (Beware! Cutting-edge hardware installed!) **Jacquelyn Ford Morie & Christopher Stapleton, SIGGRAPH 94, 321 Elkhorn Court, Winter Park, FL 32792; 407-678-9600; fax: 407-658-5059**

*Deadline March 15*

### **Call For Papers, Panels, and Presentations**

The Center for Art Research in Boston will sponsor a National Symposium on Proposed Arts and Humanities Policies for the National Information Infrastructure, Oct. 14-16. Submit a 250-word abstract of your proposal for a paper, panel-discussion or presentation, accompanied by a one-page vitae. **Jay Jaroslav, Center for Art Research, 241 A Street Boston, MA, 02210-1302; 617-451-8030; fax 617-451-1196; jaroslav@artdata.win.net**

*Deadline March 2*

### **Hometown Video Festival**

Formats: 3/4", VHS (send highest generation dubs-not master; feel must be included with tape) Fees: \$21-56; enclosed \$6 for return of tape. Festival Date: July. **Hometown Video Festival, c/o The Buske Group, 2015 J St. Suite 28, Sacramento, CA 95814; 916-441-6277**

*Deadline March 15*

### **New American Makers**

An ongoing project to show video works that extend the boundaries of creative video/television. Venues: the state-of-the-art theatre of Center for the Arts in San Francisco and local public television. Honorarium: \$2 per minute. Format: VHS. Tapes selected in March will screen this summer. **New American Makers, PO Box 460490, San Francisco, CA 94146**

*Deadline March 30*

### **1994 National Juried Competition**

Solo/group show award. Juror: Diane Waldman, Deputy Director and Senior Curator, Guggenheim Museum. SASE to: **Phoenix Gallery, 568 Broadway, New York, NY 10012, 212-226-8711.**

*Deadline March 30*

### **Encyclopedia of Living Artists Cover Contest**

This is a publication that has recently begun including computer art. SASE to: **ArtNetwork**

**Cover Contest, PO Box 369, 13284 Rices Crossing Rd., Renaissance, CA 95962; 916-692-1355**

*Deadline March 30*

### **SIGGRAPH 94 Slide Sets (Pittsburg, PA)**

New algorithms, innovative applications, or just plain beautiful imagery. The Slide Sets will be available for purchase both during and after the conference. Slide Set Images will also be included on the SIGGRAPH 94 Multimedia CD-ROM. **Gray Lorig, SIGGRAPH 94 Electronic Media Chair, Barking Trout Productions, 1332 Malvern Avenue, Pittsburg, PA 15217; 412-681-4279; fax: -6258; slides.s94@siggraph.org**

*Deadline March 30, 5 pm CST*

### **Student Volunteers**

SIGGRAPH 94 invites students to be part of the most exciting event in the computer graphics field. Application and copy of student ID must be received. **Gary Jackemuk SIGGRAPH 94 Contact: Maureen Baumann, SIGGRAPH 94 Student Volunteer Program, 401 North Michigan Avenue, Chicago, IL 60611; 312-321-6830; fax: -6876; students.s94@siggraph.org**

*Deadline March 31*

### **31st International Short Film Festival**

May 31-June 4, Kijow Theatre. Documentary, animated, and other films max. 30 minutes, produced after 3/1/93. **International Short Film Festival in Krakow, Apollo-Film, 30-364 Krakow, ul. Pychowicka 7, Poland; tel. +67-13-55; fax: +67-15-52**

*Deadline March 31*

### **New Voices, New Visions**

Competition for art that could only be created on the computer and can only be viewed on one. Eligible: digital works, any format, any subject. Sponsored by *Wired* magazine, Voyager (laserdisc publishing company) and Interval Research. Three \$5000 awards. For prospectus, call or email: **Voyager, 212-431-5199; infobot@wired.com, with the words "send visions" in the message; on the Well: "muchomedia" conference, Internet gopher site: gopher.well.sf.ca.us-Arts Folder, Wired Infobot**

*Deadline April 1*

### **Beyond Fast Forward: A New Media Arts Event**

Interactive installations that reconcile the New Digital Technologies with Human Experience. Co-Sponsored by 911 Media Arts Center & Northwest CyberArtists. Collaborative works encouraged. Allow for multi-modal sensory experiences, multiple participants and a constant flow of participants; base your work on process rather than objective. For pros send

SASE to: BFF, 911 Media Arts Center, 117 Yale Ave. N. Seattle, WA 98109; Chris at 911: 206-682-6552

### **ARTwork's Sales and Rental Program**

Needs work that represents the cultural diversity of the Bay Area. Work by minorities and artists of color are needed to satisfy the requests by collectors, designers, and businesses who want to support local artists. Send slides to **ARTwork, 2861 California St., #5, San Francisco, CA 94115. Info: Montrese 415-267-7620**

### **Capp Street Project**

This non-profit was established in 1983 "to focus attention and resources on the field of site-related installation." Four residencies p/yr. Other programs include experimental projects exhibitions, workshops, lectures, performances. **Linda Blumberg, Exec. director, Capp Street Project, 525 2nd St., San Francisco, CA; 415-626-7747**

### **Challenge Opportunity With Growth**

Arts Program Director opening with a respected, established, and nationally recognized community arts organization that produces award-winning multicultural arts events and interdisciplinary arts outreach programs. Requirements: BA in art or art education with 2-5 yrs. exper., arts administration background w/ visual arts emphasis. Arts Program Director, reporting to the agency's Executive Director, develops, manages and coordinates arts programs, events and exhibitions. Minimum starting salary is \$25,000 per year, plus benefits. No telephone inquiries please. Send resumes to: **Tapestry in Talent of San Jose, Inc., 50 North First Street, Suite 200, San Jose, CA 95113, EOE/FM**

### **Discount on Professional Portfolio**

In San Francisco Area **ARTwork** now offers discounts on photography, printing, framing, writing, editing and other art related services needed for professional art marketing. **ARTwork** aids artists who are putting together a portfolio for the first time; offers established artists discounts on special framing, printing, or professional writing/edition services through local businesses who support the art community. **415-267-7620**

### **FineArt Online Gallery**

Call for artists to participate in the new **FineArt Online Gallery** in three possible ways: 1/ by inviting us to link to an existing exhibit elsewhere; 2/ by proposing a new exhibit that we will help you build; 3/ by submitting individual artworks for the **FineArt Open Gallery**. We would also like to hear from writer, musicians and video artists who would like to help us get these media formats on-line.

**FineArt Forum** is a general bulletin board seeking interesting information about your activities. For more on **FineArt Forum**, see page 7. **pgb2@ra.msstate.edu**

### **Deadline Unclear**

### **Global Identities, Global Technologies (Atlanta, GA)**

Formation/Dissolution. Public Domain is planning a project during the Olympics in Atlanta (1996). Theme: Identity: Formation/Dissolution (individual, group, national, and international identity transformed by technological infrastructure). **Public Domain, PO Box 8899, Atlanta, Georgia 30306-0899; 404-621-5838; info@pd.org**

### **International Video Project**

International experimental video and computer art of all types wanted for gallery collection and exhibition. (If you are a person who created a Quicktime movie and have been wanting to show it, here is your chance. Gallery can convert any Quicktime movie to video). Send videos and disks to: **Second Floor Gallery c/o Dana Martinelli, 230 Brownsville Road, Pittsburgh, PA 15210; 412-381-1821; dm4@andrew.cmu.edu**

### **Presence: Call for Participation**

**Presence** will devote an issue to "Networked Virtual Environments and Teleoperation". Co-editors of this special issue are Michael Zyda and Michael Macedonia of the Naval Postgraduate School. About the state-of-the-art in networked virtual environments and teleoperation research. Details: **Michael Zyda, Presence, Naval Postgraduate School, Code CS/Zk, Dept. of Computer Science, Monterey, California 93943-5100; 408-656-2305 (work); fax 408-656-2814**

### **USA Film Festival (Dallas, TX)**

Formats: 3/4", 1/2", 16 mm and 35 mm; Fees: \$40; Categories: Narrative, Nonfiction, Animation, Experimental, Creative Commercials. Prizes based on originality. Cash prizes. **Short Film and Video Competition, 2917 Swiss Avenue, Dallas, TX 75204; 214-821-6300**

### **Needs/Offerings**

#### **Art Calendar 1993-4 Annual**

Published by **Art Calendar**, the business magazine for artists, from which Ylem draws some of its Calendar items. 1,200 listings. Includes alternative spaces, museums and university-level galleries, slide registries, agents, residencies, art consultants, organizations, corporate collections, and more. Intelligent format makes it easy to use. \$15. Get the next one free with your yearly

*Knight's Tour Fractal, computer art by Ronald Brown*

subscription, \$32 p. yr. **Art Calendar, PO Box 199, Upper Fairmount, MD 21867; 1-800-597-5988**

### **Artist's Tax Guide and Financial Planner**

Setting up/keeping books; taxes; retirement plans; sales and use tax; inventory; more. Paperback, 388 pages. \$16.95 + \$3 shipping from: **Art Calendar, Box 199, Upper Fairmount, MD 21867**

### **Bay Area Arts & Crafts Guild**

The San Francisco Bay Area's only multimedia crafts guild is open to electronic arts that incorporate some craft work. Since 1952 they have published a newsletter and arranged group shows. **BAACG Newsletter, Fern Fritz, Editor, 445 South 15th Street, San Jose, CA 95112**

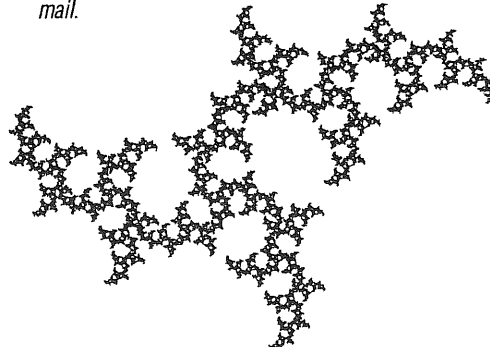
### **Sara's Geometric Dreams**

By computer artist Sara Frucht. Elevates the computer "screen saver" to art! The Modules in **Sara's Geometric dreams** are After Dark compatible. Also included on the disk is BirdTree's Sunset Screen Saver environment for those who do not have After Dark. Signed copies are \$20. **BirdTree Associates, Contact: Loring Vogel BidTree Associates, 156 Fairmount Street, San Francisco, CA 94131; 415-282-0175; fax: 415-641-9104; 452257@mcimail.com.**

### **Storyspace:serious hypertext (Watertown, MA)**

Storyspace, the tool of choice for the serious writer. Link ideas quickly and permanently. Multiple views give you fresh perspective. Organize writing spaces by dragging them inside other writing spaces. Fast and compact, with unlimited capacity. Creates stand-alone applications. Color pictures, sound effects, and video. Ideal for research and analysis. Storyspace TM - The complete hypertext writing environment. \$215.00. **Eastgate Systems, Inc., Civilized Software, 134 Main Street, Watertown, MA 02172; 800-562-1638; 617-929-9044.**

*Some calendar items reprinted from Art Calendar (PO Box 199, Upper Fairmount, MD 21867. Subscriptions \$32/yr.), Wired, Video Networks (from BAVC), Leonardo Electronic Almanac and FineArts Forum e-mail.*



# Pullulating Communications Resources

## A Universal Language

A global exchange of college, university and art school student art work. With your help, we hope the *Universal Language of the Visual Arts* will provide an international exchange of issues, ideas and techniques from school to school. It's among the first projects of this kind on the college and university level to be organized using email. Contact: **Robert Fromme**, [rfromme@tenet.edu](mailto:rfromme@tenet.edu) or [71664,2532@CompuServe.com](mailto:71664,2532@CompuServe.com); tel. 210-393-4176

## Banana Productions

Artists' stamps, a service by mail artist Anna Banana. 500 color, gummed stamps: \$135 (.27¢/stamp). Share a block of 6 with friends, 500 copies, \$660. (.22¢/stamp). Much better rates on higher quantities. Stamps also issued as a "periodical" called *International Art Post*. **Banana Productions, PO Box 3655, Vancouver, BC, Canada V6B 3Y8; 604-876-6764**

## FineArt Forum

*FineArt Forum* is the art bulletin board from which Ylem gets many calendar announcements. It's run by **Paul Brown, PO Box 1292, Mississippi State, MS 39762-1292; 601-325-3053; fax 601 325 3850**; Send submissions of items to be published in *FineArt Forum* to [pgb2@ra.msstate.edu](mailto:pgb2@ra.msstate.edu), to subscribe, contact [fast@garnet.berkeley.edu](mailto:fast@garnet.berkeley.edu) with the message: SUB FINE-ART your Email address, first-name, last-name, and postal address. Paper copies available for USD \$65 per year subscription. Pay to: **ISAST, 672 South Van Ness, San Francisco, CA 94110**

## FineArt Gopher Servers

From *Fineart Forum* you can gopher into the following servers: Minneapolis College of Art and Design gopher, <gopher.mcad.edu> (port 70). Access to some art, design and media resources. Info: [andym@mcad.edu](mailto:andym@mcad.edu) (Andy Mickel). Strange Interactions gopher, [amanda.physics.wisc.edu](mailto:amanda.physics.wisc.edu) (port 70). Run by John E. Jacobsen, visual artist, physicist from U-Wisconsin Madison High Energy Physics/Madison, WI 53706; [jacobsen@amanda.physics.wisc.edu](mailto:jacobsen@amanda.physics.wisc.edu). Most exciting, *FineArt* gopher service now includes *World\_Wide\_Web* service. The WWW allows interactive hypermedia to be published, with hyperlinks to anywhere on the InterNet. This remarkable potential turns the net into an easy-to-use, media-rich library. Although WWW supports audio and video we are currently only using the colour graphics and hyperlinking capabilities. Our Gallery has opened with a show by Australian Artist Wendy Mills; a link to the Fractal Gallery at the University of Rennes in France, exhibiting work by Canadian

Computer art by Pamela Hobbs

computer scientist and artist Noel Giffin; an archive of work by Benoit Mandelbrot. Its WWW address or URL is: [http://www.msstate.edu/Fineart\\_Online/home.html](http://www.msstate.edu/Fineart_Online/home.html)

## FineMedia online n\_e\_w\_s

*FineMedia*, a new media culture magazine, is no longer be distributed in printed form. Two independent services are now offered. Georg C. Puluj will issue *FineMedia* online: New articles are fed into the Internet and sent to subscribers as soon as they are available. The *FineMedia Calendar*, which provides an overview of international events, are stored in the LINK-M network for retrieval in constantly updated form. Also, Arthur Schmidt publishes *FineMedia* interactive, a CD-ROM for Apple Macintosh and Silicon Graphics systems. **email: [finemedia@link-m.muc.de](mailto:finemedia@link-m.muc.de) or 100271,2225**

## Fringeware List

The email list for people who hang out on the fringes of art, society and technology, sponsored by FringeWare Inc. Product updates, radioactive shirts, mega alien-fu, fun gizmos and widgets. For list, contact: [\\_fringeware-request@io.com](mailto:_fringeware-request@io.com)

## German Copy Art Show

The first copy art show in Germany is past, but a catalog is available for \$16, and a limited-edition set of 30 works for \$250. **Bezirks Verband, Pfalz, PfalzGalerie Kaiserslautern, Museumsplatz 1, 67657 Kaiserslautern, Germany, Europe; tel. 0631-84009-35**

## Internet Directory

The *Internet Directory* by Eric Braun, published by Fawcett Columbine, New York, 1994. Covers: InterNet and Bitnet Mailing Lists; Usnet Newsgroups; On-Line Library Catalogs (OPACs); Anonymous FTP Archives and Archie Servers; Gopher Servers; Electronic Journals [pls1@ra.msstate.edu](mailto:pls1@ra.msstate.edu)

## ISEA'94 Online

The 5th International Symposium on Electronic Art has a worldwide online discussion forum for its theme topics through Internet, and information about ISEA'94. Discussions with a hypertext interface and possibility to view audio and image information. Topics: Spacescapes: How electronic arts change our sense of body, space, society, mind. High and Low Technology, Culture: The uses to which technology is put, for good or ill. The Next Generation: A world without teachers? ISEA Online is based on the World Wide Web service which can be viewed with Mosaic (available for Unix, Windows and Mac at



[\\_ftp.ncsa.uiuc.edu](ftp.ncsa.uiuc.edu)). Use programs like FTP or Fetch to retrieve the files from NCSA. Without Mosaic, you can use Lynx, available, among other places, in [\\_ftp.funet.fi](ftp.funet.fi) directory [\\_pub/networking/services/WWW](pub/networking/services/WWW). Telnet to [\\_info.funet.fi](info.funet.fi) and login as info. Then select WWW and Lynx and run it from there. One interface that should work on any kind of terminal is linemode WWW which can be tried with telnet <info.cern.ch>.

## Leonardo Electronic Almanac

*Leonardo Electronic News*, a monthly electronic newsletter, has been expanded. It now offers columns and artists' statements as well as profiles of media in arts facilities, theoretical and technical perspectives, reviews of major events. Still offers calendar of electronic arts events. \$25 per yr., free to *Leonardo* subscribers. **Leonardo Electronic Almanac, MIT Press Journals, 55 Hayward St., Cambridge, MA 02142; 617-253-2889; Fax 617-258-6779; [journals-orders@mit.edu](mailto:journals-orders@mit.edu)**

## Romanian Media Link

Romanian media people want to communicate by snail mail or email about the latest artistic developments, and information about their creators. Emphasis: performing arts. Books and magazines appreciated. **Mircea Kiraly, Multimedia Lab, Theatrical Communications Department, Academy of Theatre and Film, Str. Matei Voievod 75-76 Bucharest, Romania; tel. 3.11.78.80; fax 3.12.78.80; [toto@roearn.ici.ro](mailto:toto@roearn.ici.ro)**

## SPIE's Holography Listserver

SPIE, The International Society for Optical Engineering, is a non-profit technical society. SPIE's holography listserver is open to anyone interested in holography. Not for commercial purposes. Contact: **SPIE, PO Box 10, Bellingham, WA 98227; 206/676-3290; fax: 206/647-1445; [spie@mom.spie.org](mailto:spie@mom.spie.org) – type HELP for list of services.**

## The Whole Internet

User's Guide and Catalog, by Ed Krol. Clearly-written! **O'Reilly & Associates, 707-829-0515; [nuts@ora.com](mailto:nuts@ora.com)**

Please send a **membership application** and sample newsletter to (me) (my friends) at:

NAME \_\_\_\_\_

ADDRESS \_\_\_\_\_

\_\_\_\_\_

\_\_\_\_\_

**Yearly membership rates:**

US Individual \$30  
US Institution \$45  
US Student or Senior \$20

Canada/Mexico add 5 US\$ to US rates; all other countries add 15 US\$ to US rates.

Membership includes 12 issues of the *Ylem Newsletter* & listing in the *Artists Using Science and Technology Directory* which you will receive in the Autumn.

**Mailing labels of Ylem members**

(about 250 artists & art enthusiasts) are available to Ylem members for \$20. Info: Bev Reiser 510-482-2483 or send \$20 with your request to address below.

Sample issue & application only (free)  I enclose \$ \_\_\_\_\_ for membership (see above)

**Ylem** is a non-profit, networking organization.

**Board of Directors**

Beverly Reiser (President)  
Trudy Myrrh Reagan (V. P.)  
Gary Zellerbach (Treasurer)  
Eleanor Kent (Mshp. Chair)  
Theodosia Ferguson  
Lucia Grossberger  
Ken Rinaldo  
Larry Shaw  
Stephen Wilson

**Advisory Board**

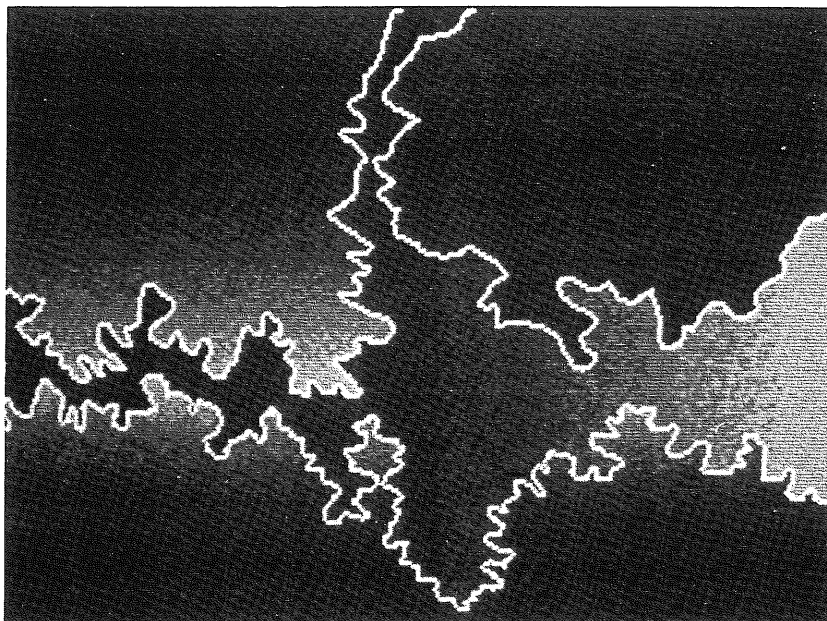
Will Cloughley, *Synapse Productions*  
Nancy Frank, *Frank Relations*  
Nathaniel Friedman, *Dept. of Mathematics, SUNY Albany*  
Roger Malina, *Center for Extreme Ultraviolet Astrophysics*  
Dr. Clifford A. Pickover, *IBM Thomas J. Watson Research Laboratory*  
Sondra Slade, *Synapse Productions*  
Fred Stitt, *San Francisco Institute of Architecture*  
Joan Truckenbrod, *School of the Art Institute of Chicago*

**Newsletter**

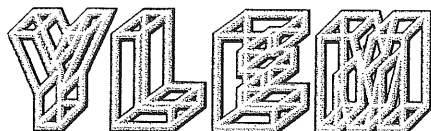
Trudy Myrrh Reagan  
Russell Reagan

**Forums**

Trudy Myrrh Reagan  
Larry Shaw  
Louis M. Brill



World Map, computer art by Sr. Judith Savard



**Artists Using Science and Technology**  
**PO Box 749, Orinda, CA 94563**

Use this address for membership info./renewals. See below for newsletter editor/submissions address.

**Contributions are most welcome**

The Ylem Newsletter welcomes Ylem members' art and articles, notices of events, exhibitions, etc. Art submitted must reproduce well with b&w copy machine. If you have done art on a Macintosh, you may send us a disk. Please include title, date created, medium and phone number. Articles should be 400-800 words long, preferably on a Mac disk. Send to **Ylem Editor** (see below).

**Ylem's two addresses:**

Submissions and notices for Newsletter, write:

**Ylem Editor, 967 Moreno Ave.  
Palo Alto, CA 94303  
Trudy, 415-856-9593  
trudymyrrh@aol.com**

Membership info., any other Ylem business, write:

**Ylem (main office)  
PO Box 749  
Orinda, CA 94563  
beverly@idiom.berkeley.ca.us**

ISSN 1057-2031  
©1994 Ylem

**March  
Newsletter**

ADDRESS CORRECTION REQUESTED  
RETURN POSTAGE GUARANTEED